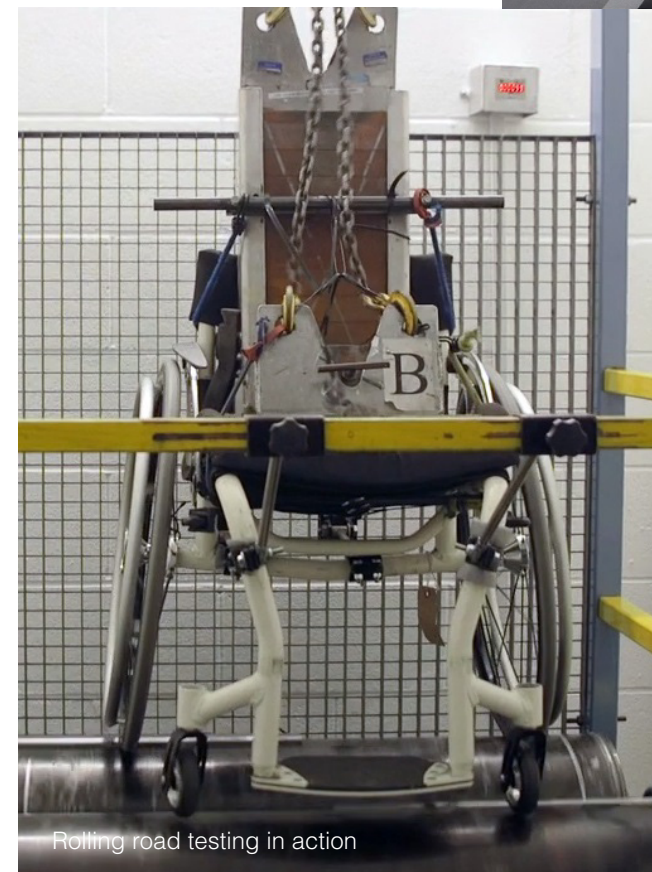


As we approach and look forward to enjoying the Paralympics in Rio, Roma Sport is planning its activities for the next cycle and the road to Tokyo in 2020. We are focused on continuing our activities in design, innovation and development over the next 4-year period and are in discussions with various sports governing bodies to work with them on bespoke programmes for their respective disciplines.

Since 2013, when Roma Sport began manufacturing its portfolio of Rugby Wheelchairs, the journey we have undertaken has allowed us to explore alternative solutions to the traditional tape measure. Our developments now allow us to provide athletes with true made to measure wheelchairs removing guess work and eliminating human error in the collection of client measurements.

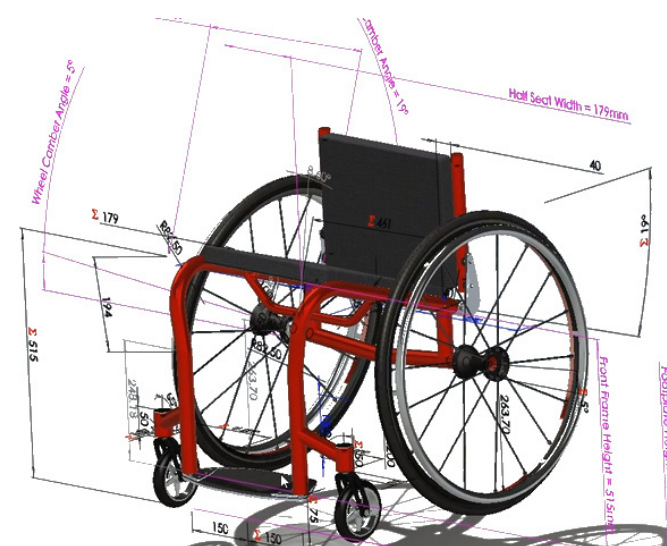


Paralympian & Roma employee Aaron Phipps, training at the GSK Human Performance Lab.



Rolling road testing in action

Over this time the development of our patented Contour Body Mapping™ system has enabled us to offer a package that accurately simulates the true feel of their new wheelchair before any metal is cut. It is testament to the company's vision that we have recently introduced the MK V version of the system which is directly linked to our bespoke CAD Design package.



## Not Reinventing The Wheel - But How You Are Measured

Roma ensures all of its sports portfolio are thoroughly tested in-house and are made of the highest quality materials and components. We are extremely proud to be an independent British company that manufactures products within our facility based in Bridgend, South Wales.

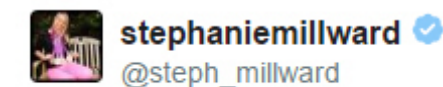
A substantial investment has been made within Roma Sport to test and measure the materials and components we use, for example a rolling road has been installed so we can scrutinise the performance of parts that are utilised on our wheelchairs – every single component is tested to destruction prior to it being approved for use on our chairs. If it doesn't perform it doesn't get used.

This ensures that when we supply a product we have the confidence that it will perform in the way it was designed to and give trouble free performance.

Our customers' needs and requirements are of paramount concern to us. This has driven us to question how chairs have historically been produced and has led to many innovations such as our Torsion Seating Plate, our patented seating system that eradicates canvas sag/bottoming. This plate is made of polycarbonate material supported by titanium components to be lightweight yet robust.

We wish every member of TEAM GB the best of luck during the games in Rio! In particular, we would like to wish Stephanie Millward all the very best in her bid for Gold at Rio. Stephanie will be competing in her 3rd Paralympics and is looking to go one better after winning 4 silver medals and 1 bronze medal in London 2012. She also broke the S8 100M Backstroke World Record at the British Summer Championships in July. We are proud to support Stephanie who will be taking her Roma Reno II power chair which we have specially modified and personalised.

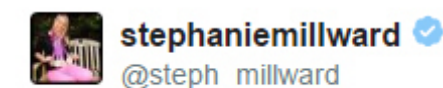
*Proud to Supply*



@Roma\_Medical This is such a wonderful chair- one ride and everyone loves it!!! Amazing chair and amazing company thank you so much!!!

4:18 PM - 3 Aug 2016

2 3



@Roma\_Medical it's an amazing chair! Perfect in every way!!!!

11:26 AM - 3 Aug 2016

2 3

